



Pontoon Place @ Carlingford in Lalor

Pontoon Place @ Carlingford in Lalor

Carlingford Masterplan



Burbank Business Park
Aberdeen Road Altona VIC 3018 Australia
Burbank Australia Pty Ltd ABN 91 007 099 872
Telephone: +613 9328 0333
Facsimile: +613 9328 0222
E-mail: build@burbank.com.au
Website: burbank.com.au



Carlingford

Burbank reserves the right to alter inclusions without notice. These inclusions only apply to Pontoon Place (unless individual items are varied by Contract Variation) and supersede any previous inclusions sheets. Items may be subject to town planning and developers approval. Electrical and colour consultations not offered on these terraces. *Copyright conditions. All photos and illustrations are representative only. Floor plans and specifications may be varied by Burbank without notice, the dimensions are diagrammatic only and a Building Contract with final drawings will display correct dimensions and detail. All designs are the property of Burbank and must not be used, reproduced, copied or varied, wholly or in part without written permission from an authorised Burbank representative. Copyright Burbank Australia Pty Ltd. ABN 91 007 099 872. Builders Registration Number DB-U 3333.



Pontoon Place @ Carlingford in Lalor



Carlingford

Come home to Pontoon Place and choose one of Burbank's stunning new contemporary terraces.

Excellence in design can be yours with 7-Star energy efficiency, double glazed windows throughout and quality stainless steel fittings and appliances, all topped off with your choice of internal colour schemes.

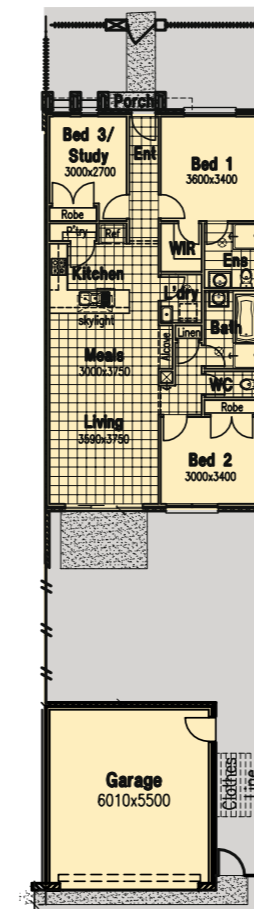
Pontoon Place, part of Lalor's Carlingford Estate, boasts over 9 hectares of landscaped open space, dotted with tree-lined streets and cycle paths.

Your new address, 17km north of Melbourne's CBD, enjoys established schools, as well as recreational, sporting and cultural facilities all within easy reach.

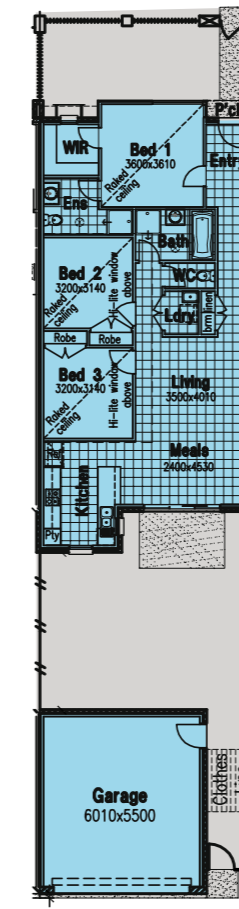
The following items are included in conjunction with Burbank Projects Inclusions List.

- 3 bedrooms, 2 bathrooms
- 7-Star energy rating to dwelling
- Double glazed windows throughout dwelling
- Internal and external light fittings
- Electric panel heating with timers to living, bedrooms and study
- Solar hot water service
- Front and rear yard fencing
- Paving, clothesline and letterbox
- Landscaping to front yard
- Remote access to double garage with 2 hand pieces
- Toilet roll holders and towel rails
- Holland blinds throughout
- Feature border tile to bathroom, ensuite and kitchen
- Predetermined external colour scheme
- Fixed site costs
- Local authority requirements

Floor Plan Samples



"Merlin"



"Peregrine - intermediate"



FROM
\$374,500

or with FHOG*
\$354,500

for eligible First Home Buyers

